

Panasonic®

Operating Instructions
使用說明書
AC/Rechargeable Professional Hair Clipper
交流電源 / 充電式專業用理髮器

Model No. ER1510
型號

English	2
中文	7



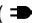
Before operating this unit, please read these instructions completely.
操作此產品前，請先讀畢此守則。

Important

► Before use

This clipper is designed for professional use to trim hair and beards. Charge it for 8 hours before use for the first time in order to activate the built-in rechargeable batteries. It can be operated on either an AC adaptor or rechargeable batteries. Read all instructions carefully before use.

► Charging the clipper

- Use the ER1510 hair clipper with the RE9-43 adaptor only.
- Avoid charging the batteries at temperatures below 5 °C or above 35 °C.
- Avoid charging the batteries in direct sunlight or near a radiating heat source.
- The charge status () lamp may blink at an early stage when it is used for the first time or if it has not been used for 6 or more months even if it is fully charged. This is not a malfunction.
- Even though the clipper may not be used for an extended period, charge every 6 months to preserve battery life.
- The power cord cannot be replaced. If it is damaged, the AC adaptor should be discarded.

► Using the clipper

- Warning - Keep the appliance dry.
- The clipper may become warm during operation and/or charging. This is normal.
- Check that the blades and the attachments are not damaged before use. Replace them if they are damaged.
- You should not allow permanent wave lotion, hair restorer or hair spray to come into contact with the main body or the blades. Doing so may result in cracking, discoloring or corrosion.
- You should not drop the clipper on the floor.
- You should not knock the blades and the attachments against hard objects.
- You should not trim the hair of a pet.

► Cleaning the clipper

- Clean the housing using only a cloth slightly dampened with water or a mild soap solution.
- Never use a caustic solution.
- Never submerge the clipper in water.

► Storing the clipper

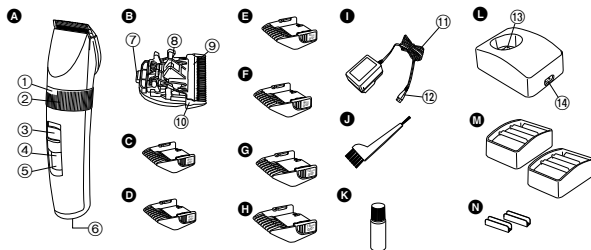
- This appliance is not intended for use by persons (including children) with reduced physical, sensory or mental capabilities, or lack of experience and knowledge, unless they have been given supervision or instruction concerning use of the appliance by a person responsible for their safety. Children should be supervised to ensure that they do not play with the appliance.
- Never tamper with moving parts.
- Avoid grabbing the clipper by the power cord, as it may become detached, causing damage or injury.
- If the clipper is not working properly, have it inspected at an authorized service center.

Specifications

Power source: See the name plate on the product.
Motor voltage: 2.4 V DC
Charging time: 1 hour

READ ALL INSTRUCTIONS BEFORE USE.

Parts identification



A Main body

- ① Trimming height indicator
- ② Dial (Height adjustment control)
- ③ 0-CHARGE/1 switch
- ④ Battery capacity lamp
- ⑤ Charge status (→) lamp
- ⑥ Appliance socket

B Blade

- ⑦ Mounting hook
- ⑧ Cleaning lever
- ⑨ Moving blade
- ⑩ Stationary blade

C 3 mm comb attachment

- D 4 mm comb attachment
- E 6 mm comb attachment
- F 9 mm comb attachment
- G 12 mm comb attachment
- H 15 mm comb attachment
- I AC adaptor (RE9-43)

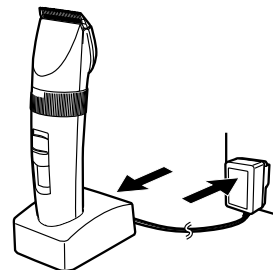
- ⑪ Power cord
- ⑫ Appliance plug
- J Cleaning brush
- K Oil

- L Charging stand
- ⑬ Charging plug
- ⑭ Socket
- M Comb attachment shelves (x2)
- N Connectors (x2)

Charge

Charging the hair clipper

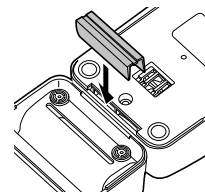
- 1 Connect the power cord to the charging stand.
- 2 Slide the 0-CHARGE/1 switch to "0-CHARGE".
- 3 Place the clipper on the charging stand and plug in the adaptor into a household outlet.



- Charge status (→) lamp glows and charging starts.
- Charging is completed when Charge status (→) lamp blinks. (Max. 1 hour later)
- 1 full charge will provide approximately 70 minutes of continuous operation.

Connecting the comb attachment shelf to the charging stand

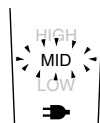
- Determine the connection position for the charging stand and comb attachment shelf. Firmly insert the connector into the slot at the bottom of the charging stand.
- If the unit wobbles, then further push in the connector since it has not been firmly inserted.



English

About the LED display

While charging



➡ glows.

- "HIGH", "MID" or "LOW" blinks.

After charging is completed



➡ blinks once every second.

10 minutes after charging is completed



➡ blinks once every 2 seconds.
• "HIGH/MID/LOW" go out.

While using



"HIGH" blinks - The battery capacity is enough.
"MID" blinks - The battery capacity is approx. 60% or less.
"LOW" blinks - The battery capacity is approx. 10% or less.

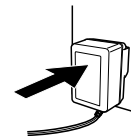
- Charge the clipper when "LOW" starts to blink.

► Charging without the charging stand

1. Slide the 0-CHARGE/1 switch to "0-CHARGE", and insert the appliance plug into the clipper.



2. Plug in the adaptor into a household outlet.



► AC operation

If you connect the AC adaptor to the clipper in the same way as for charging, and turn on the power, you can use it even if the battery capacity is low.

- If the clipper does not operate, charge the clipper for approximately 1 minute.
- Be careful not to discharge the battery completely with the power left turned on. It results in shortening the battery life.

Cut

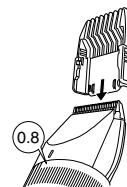
Using the hair clipper

Turn the dial clockwise or counterclockwise to adjust the moving blade back and forth to get the desired height. Adjustable in 5 stages from 0.8 mm to 2.0 mm in 0.3 mm steps without attachments.



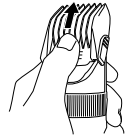
► Using the comb attachments

- 1 Select the trimming heights indicated on the insides and sides of the attachments.
- 2 Set the dial to "0.8" and then mount the attachment to the clipper as illustrated.



Removing the attachment from the clipper

Remove the attachment as illustrated.



Care

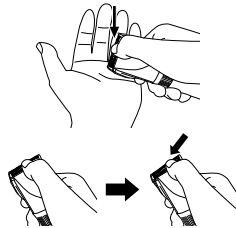
Blade maintenance

Removing and mounting the blade

► Removing the blade

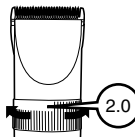
1. Hold the clipper with the switch facing upward and push the blade with your thumb while catching the blade in your other hand.

- Be sure to turn off the power before you remove the blade.

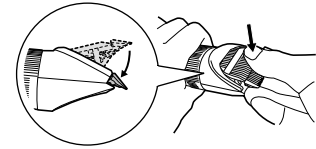


► Mounting the blade

1. Set the dial to "2.0".



2. Fit the mounting hook into the blade mounting on the clipper and push in until it clicks.



Cleaning the blade

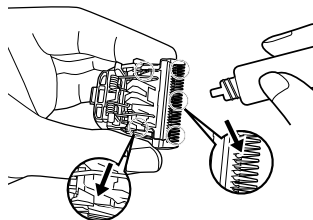


1. Brush off any hairs from the blade and brush off from around the blade.
2. Remove the blade and brush off the hairs from the blade edge.
3. Brush the hairs out from between the stationary blade and the moving blade while pressing down on the cleaning lever to raise the moving blade.

English

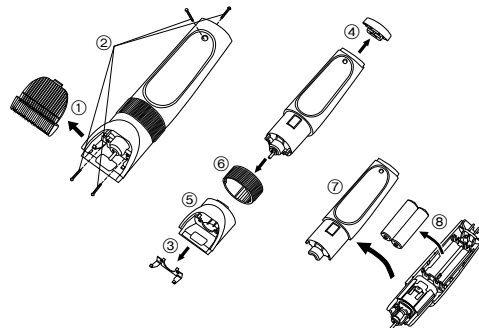
Lubrication

1. Apply a few drops of the oil to the space between the stationary blade and moving blade.
 - Apply the oil to the clipper before and after each use.
2. Set the dial to "2.0" and then remount the blade on the clipper.



Removing the built-in rechargeable batteries

1. Remove the blades ① and four screws ②.
 2. Remove the spring ③, the under cover ④, and the blade holder ⑤.
 3. Remove the dial ⑥ and open the housing ⑦, and then take out two batteries ⑧.
- Disconnect the clipper from a household outlet.
 - Discharge the batteries completely before removing them.
 - Be careful not to short-circuit the batteries.



WARNING - Do not attempt to replace the batteries for the purpose of reusing the clipper. This could result in the risk of fire or electric shock.

Important notice regarding environmental protection

The built-in rechargeable Nickel-Metal Hydride batteries contain substances that may be environmentally harmful. Please remove the batteries before discarding your clipper.

For environmental protection and recycling materials

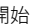
This clipper contains Nickel-Metal Hydride batteries. Please make sure that the batteries are disposed of at an officially assigned location, if there is one in your country.

重要


► 使用前

本理髮器設計用於專業修剪頭髮及鬍鬚。首次使用前先對其充電 8 小時，以激活其內置充電電池。本理髮器可隨交流 (AC) 變壓器或充電電池一起使用。使用前請仔細閱讀全部說明。

► 對理髮器充電

- 僅可隨 RE9-43 變壓器使用 ER1510 理髮器。
- 請勿在低於 5°C 或高於 35°C 的氣溫條件下對電池進行充電。
- 請勿在直射陽光下或輻射性熱源附近對電池進行充電。
- 在首次使用或者未使用達 6 個月或更久時，即使已對其完全充電，充電狀態 () 指示燈仍可能在開始階段閃爍。這不是故障。
- 即使長期不使用本理髮器，仍請每 6 個月對其充電一次以維持電池壽命。
- 不能對電源線進行更換。如果電源線破損，則應當丟棄本交流 (AC) 變壓器。

► 使用理髮器

-  警告 - 請保持設備乾燥。
- 操作和 / 或充電時理髮器可能變熱。這是正常現象。
- 使用前請確認刀刃及配件完好。如果發生損壞，請進行更換。
- 請勿讓電燙藥水、生髮劑、或噴發膠接觸機身或刀刃。否則可能導致刀刃破裂、褪色或者生鏽。
- 切勿將理髮器掉落到地上。
- 切勿使刀刃及配件敲擊硬物。
- 切勿用於修剪寵物毛髮。

► 清潔理髮器

- 使用蘸了少量水或溫和肥皂液的布對機殼進行清潔。
- 切勿使用苛性鹼溶液。
- 切勿將理髮器浸入水中。

► 存放理髮器

- 身體、感官或精神狀況欠佳，或者缺乏經驗或知識的人（包括兒童）在使用本設備時應接受負責其安全的人的監護，或關於設備使用的指導，否則不應讓其使用。應當監督兒童不要玩耍本設備。

- 切勿胡亂擺弄活動部件。
- 抓取理髮器時不要抓取電源線，否則可能拔掉電源線，導致損壞或受傷。
- 如果理髮器不能正常工作，請讓經授權的服務站進行檢測。

規格

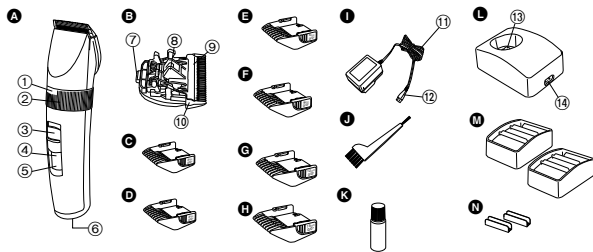
電源：請參閱產品上標籤。

馬達電壓：2.4 V DC

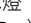
充電時間：1 小時

使用前請仔細閱讀全部說明。

零部件說明



A 機身

- ① 修剪高度指示器
- ② 轉盤（高度調節控制）
- ③ 0 · CHARGE/1 開關
- ④ 電池電量指示燈
- ⑤ 充電狀態 () 指示燈
- ⑥ 設備插孔

B 刀片

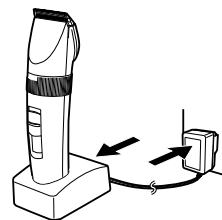
- ⑦ 安裝架掛鉤
- ⑧ 清潔杆
- ⑨ 移動刀片
- ⑩ 固定刀片

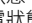

- C 3mm 梳子配件
- D 4mm 梳子配件
- E 6mm 梳子配件
- F 9mm 梳子配件
- G 12mm 梳子配件
- H 15mm 梳子配件
- I 交流 (AC) 變壓器 (RE9-43)
- ⑪ 電源線
- ⑫ 設備插頭
- J 清潔毛刷
- K 潤滑油
- L 充電座
- ⑬ 充電插頭
- ⑭ 插座
- M 梳子配件架 (×2)
- N 連接器 (×2)

充電

對理髮器充電

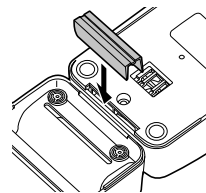
- 1 將電源線連接到充電座上。
- 2 將 0 · CHARGE/1 開關設為“0 · CHARGE”。
- 3 將理髮器放入充電座內，並將變壓器插入一個家居插座內。



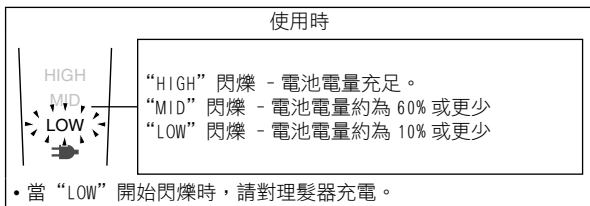
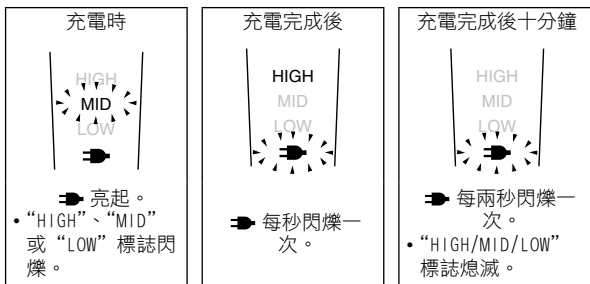
- 充電狀態 () 指示燈點亮，充電開始。
- 當充電狀態 () 指示燈閃爍時，充電完成。(最多 1 小時後)
- 完全充電一次約可提供 70 分鐘持續操作。

將梳子配件架連接到充電座上

- 確定充電座和梳子配件架的連接位置。將連接器牢牢地插入充電座底部的槽內。
- 如果裝置搖晃，則說明沒有牢牢地插入，請將連接器再向裡插入。



關於 LED 顯示器

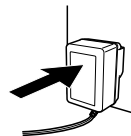


▶ 不使用充電座進行充電

- 將 0 · CHARGE / 1 開關設為 “0 · CHARGE”，然後將設備插頭插入理髮器內。



- 將充電器插入家居插座。



▶ 交流 (AC) 操作

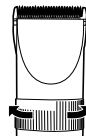
如果您將交流 (AC) 變壓器按充電時同樣的方法連接到理髮器並打開電源，即使在電池電量低時也可使用理髮器。

- 如果理髮器無法操作，則將理髮器充電約 1 分鐘。
- 請注意不要在電源打開時將理髮器完全放電。這將縮短電池壽命。

修剪

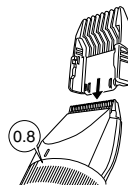
使用理髮器

將轉盤順時針或逆時針旋轉，將移動刀刃前後調節以達到理想的高度。不使用配件時，可從 0.8mm 到 2.0mm 每 0.3mm 一檔共調節 5 檔。

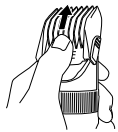


▶ 使用梳子配件

- 選擇配件內側及側面所示的修剪高度。
- 將轉盤轉到 “0.8”，然後如圖所示將配件安裝到理髮器上。



將配件從理髮器上移除
如圖移除配件。



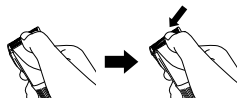
保養

刀刃保養

刀刃移除及安裝

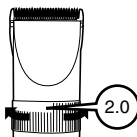
▶ 移除刀刃

1. 將開關朝上握住理髮器，用拇指將刀刃推出，同時用另一只手接住刀刃。
 - 移除刀刃前，確認關閉電源。

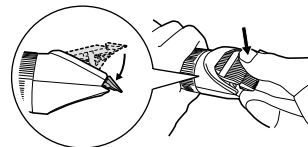


▶ 安裝刀刃

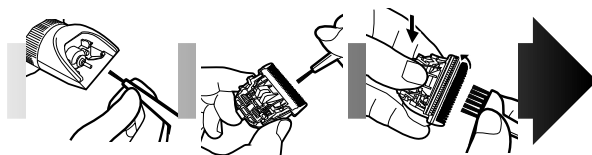
1. 將轉盤轉到“2.0”。



2. 將安裝架掛鉤壓入理髮器
刀刃架直到聽到一聲輕
響。



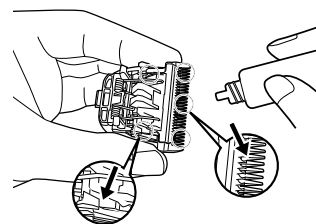
清潔刀刃



1. 將所有發屑從理髮器及刀刃四周刷淨。
2. 移除刀刃並將發屑從刀刃邊緣刷淨。
3. 按下清潔杆升起移動刀刃的同時，將固定刀刃與移動刀刃之間的發屑刷淨。

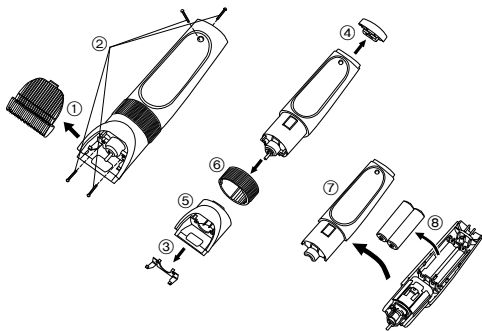
潤滑劑

1. 點幾滴潤滑劑到固定刀刃及移動刀刃之間。
 - 使用前後，都要點幾滴潤滑劑到理髮器上。
2. 將轉盤轉到“2.0”，然後將刀刃從理髮器上移除。



移除內置充電電池

1. 移除刀刀 ① 及四顆螺絲 ②。
 2. 移除彈簧 ③，下蓋 ④，及刀刀座 ⑤。
 3. 移除轉盤 ⑥，打開機殼 ⑦，然後取出兩塊電池 ⑧。
- 將理髮器從家居插座上斷開。
 - 對電池完全放電。
 - 當心不要讓電池短路。



警告 - 切勿嘗試更換電池以再次使用理髮器。這可能導致失火及觸電的危險。

環保重要說明

內置鎳氫充電電池內含可能破壞環境的物質。在丟棄理髮器之前，請先移除電池。

對於環保及可回收材料

本理髮器內含鎳氫電池。
如您的國家有指定認可棄置電池的地方，請確保將電池棄置於這些地方。



Panasonic Corporation

<http://panasonic.net>

© EN, HK

Printed in Japan
ER971015105J Y1108-40213

